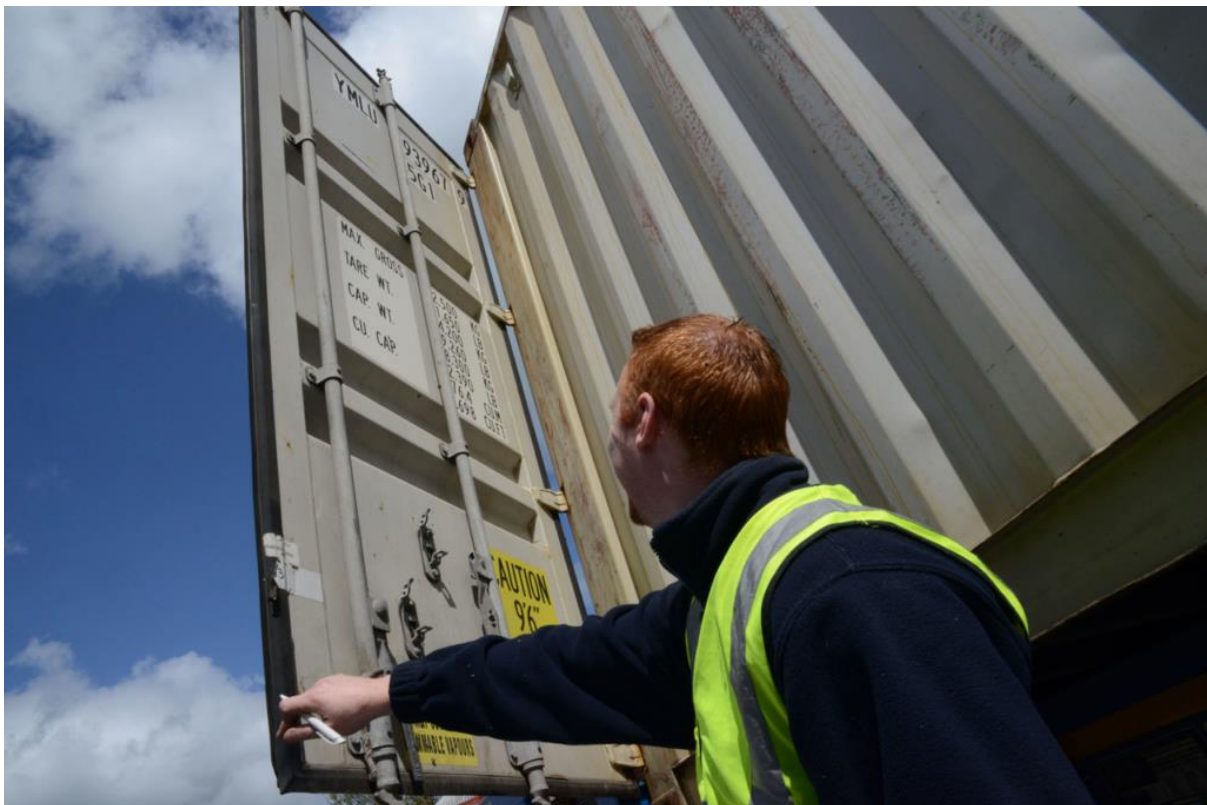


Guide to Shipping to and from Europe



Helpful guide to navigate the customs changes
for European imports post Brexit.

Whether you are new to shipping to/from Europe or just confused by the changes since Brexit we are here to help. Our guide offers key information and steps to take to ensure a smooth import or export to Europe.

Since Brexit one of the biggest changes to impact European shipping as a whole are the changes to customs requirements. It is therefore important to ensure you have a good relationship with your European customer/supplier as the paperwork that is required for import customs clearance needs to have all the correct information to ensure the goods are not held.

Any delays caused by your goods could result in fines or your goods being removed and left behind. This is particularly relevant for imports with more than one supplier being transported on the same vehicle.



This may seem daunting but at any stage of the process Isca and our team are here to help and advise so do not hesitate to contact us and we will assist with the process and talk you through the next steps.

Phone : 01392 369923

Email Imports : paul.vaughan@isca-forwarding.co.uk

Email Exports : rob@isca-forwarding.co.uk

When you book a shipment before the goods can be collected the paperwork has to be completed and checked. This is to ensure that the import entry is completed prior to the goods departure. Goods without an import customs entry will not be allowed to depart.

What details are required on the paperwork for customs clearance:

- Supplier and Customers full contact details – Address, contact name and number.
- Both EORI numbers. Unlike importing from the rest of the world when shipping to Europe the EORI number for both the suppliers and customer is required and should be shown on the commercial invoice.
- Country of origin. Alongside stating the country of origin a preferential statement is needed to ensure any goods imported are done so as duty free.

Preferential statement should be as below or similar:

“The exporter of the products covered by this document declares that, except where otherwise clearly indicated, these products are of (insert country of origin) preferential origin.”

- Value of the goods. For goods valued over €6000 a REX number will need to be provided by the European supplier and stated on the commercial invoice to ensure the goods remain duty free.
- A completed customs clearance form will also need to be provided to your freight forwarder to ensure the correct commodity code, CPC code, values, weights and sizes are used for the import and export customs entry. The next page is our templated customs clearance form, but most freight forwarders will have their own version.
- For exports it is also essential to ensure any packing used for your goods is done using heat treated and stamped timber.

Getting A Quote

There are two options for European shipments, we can quote for import or export customs clearance only and we can quote for the whole job including customs clearance.

Option 1 : Customs Clearance Only

Are charges are fixed for European customs entries as below. Please advise if you have your own deferment account and if you plan to postpone your VAT having applied for a PVA account with HMRC.

- Customs Clearance - £57.50
- Service and Attendance - £25.00
- Use of Deferment - £25.00

Option 2 : The entire Shipment including customs clearance.

To enable us to quote you will need to provide the below information.

- Quantity, dimensions, and weight.
- Collection and delivery address
- Shipping terms
- Time frame
- Completed customs clearance form.

Once we have all the details we will look at rates and send across the best available rates for the goods you are looking to ship. If at any stage you have any questions or would like an alternative transport method or quantity considered you can let you Isca team member know and they can look at options.

